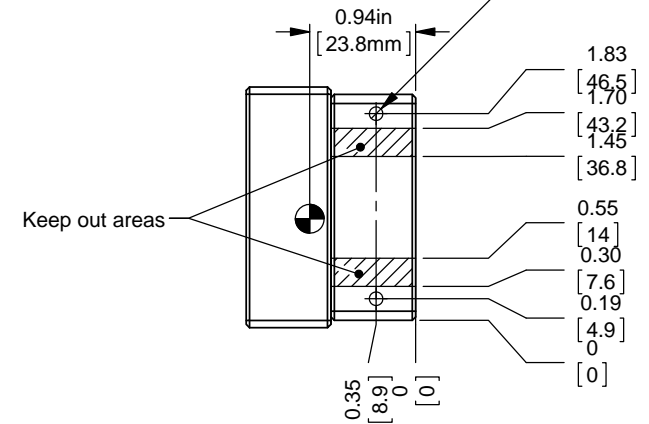

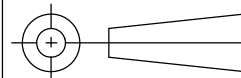


Recommended 4-40 mounting hole locations




CENTER OF GRAVITY OF JADT
 $\pm 0.03\text{in}$ [0.8mm]
WEIGHT: 0.30 lbs [0.14 kg] MAX.

UNLESS OTHERWISE SPECIFIED
 DIMENSIONS ARE IN INCHES
 ANGLES ARE IN DEGREES
 TOLERANCES:
 1 DEC PLACE: ± 0.1
 2 DEC PLACE: ± 0.01
 3 DEC PLACE: ± 0.005
 ANGLES: ± 0.5 DEG



MATERIAL: N/A
 FINISH: N/A

PREPARED TAT
 CHECKED JAC 09-10-15 DS
 APPROVED JAC 09-10-15 KDV
 CONFIDENTIAL & PROPRIETARY TO JUPITER AVIONICS CORP.
 DRAWING NOT TO SCALE



JUPITER AVIONICS CORPORATION

TITLE

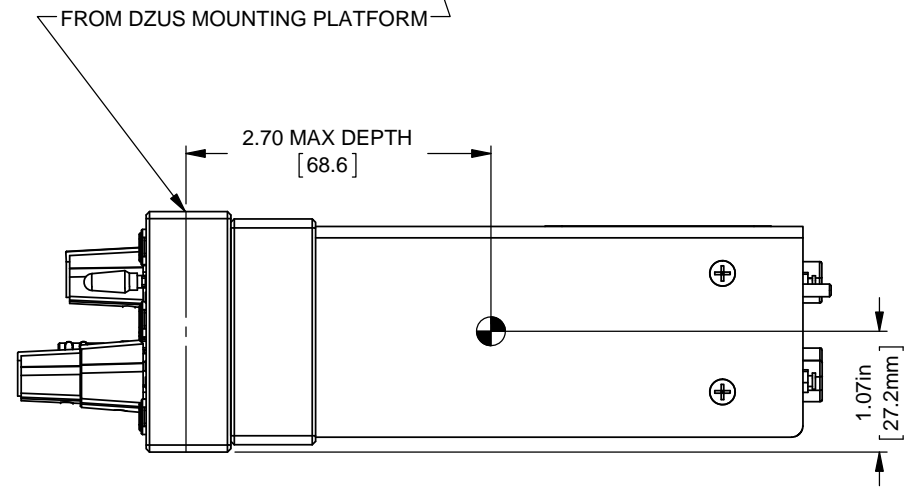
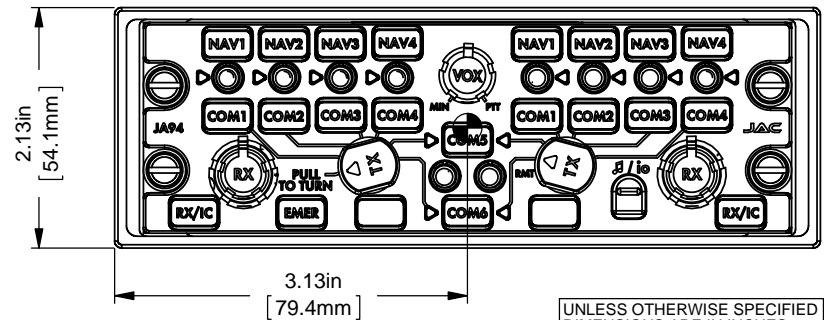
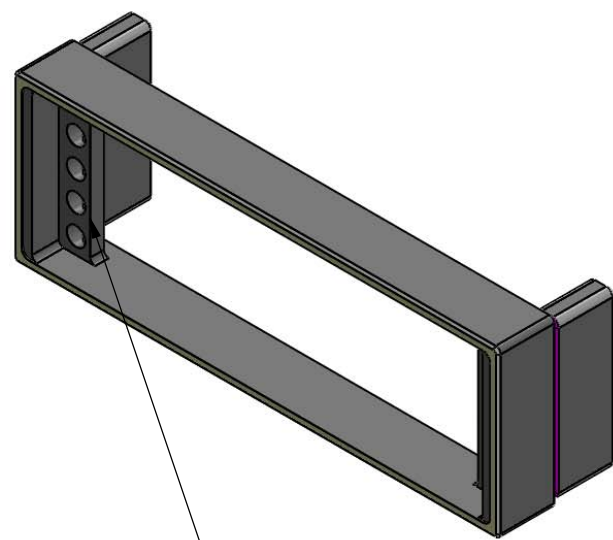
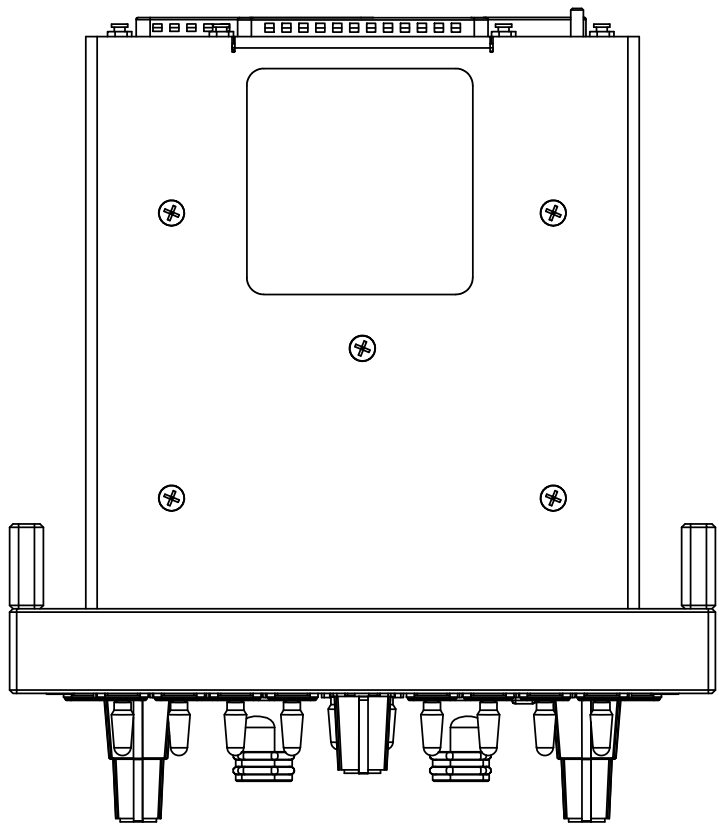
5 Dzus to Tray Adapter


NCAGE CODE
L00N3

PART NO.
JADT-005

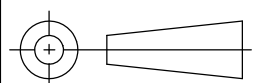
SHEET
1/2

DOC. NO.
JADT-005 Mechanical Installation Rev A.SLDDRW




**CENTER OF GRAVITY WITH
MAXIMUM 3 POUND LOAD**
 ±0.03in [0.8mm]
WEIGHT: 3.00 lbs [1.36 kg] MAX.

UNLESS OTHERWISE SPECIFIED
 DIMENSIONS ARE IN INCHES
 ANGLES ARE IN DEGREES
 TOLERANCES:
 1 DEC PLACE: ± 0.1
 2 DEC PLACE: ± 0.01
 3 DEC PLACE: ± 0.005
 ANGLES: ± 0.5 DEG



MATERIAL: N/A
 FINISH: N/A

PREPARED	TAT
CHECKED	
APPROVED	
CONFIDENTIAL & PROPRIETARY TO JUPITER AVIONICS CORP.	
DRAWING NOT TO SCALE	



TITLE 5 Dzus to Tray Adapter (Center of Gravity with Maximum 3 Pound Load)		
NCAGE CODE	PART NO.	SHEET
L00N3	JADT-005	2/2
DOC. NO. JADT-005 Mechanical Installation Rev A.SLDDRW		